

Schubert
20 Waltzes
D. 146, Op. 127

(Last Waltzes)

Nº 1.

Trio

Da Capo

Nº 2.

Nº 3.

(Fine)

Trio

f *fz* 1. 2.

p *f*

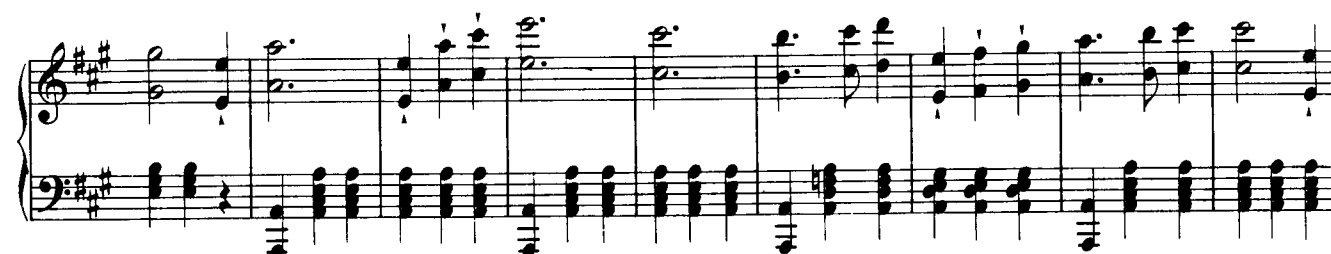
f *fz* *f* *fz*

p *p*

Da Capo

Nº 4.

f



Nº 5.

The musical score for Schubert's 20 Waltzes, No. 5, is written in B-flat major and 3/4 time. It consists of six systems of piano and vocal staves. The piece begins with a forte (*ff*) dynamic. The first system shows a piano part with arpeggiated chords and a vocal line with eighth-note runs. The second system continues with similar textures, ending with a piano (*p*) dynamic. The third system features a piano part with a steady eighth-note accompaniment and a vocal line with a repeat sign. The fourth system has a piano part with a steady eighth-note accompaniment and a vocal line with a repeat sign, ending with a forte (*ff*) dynamic. The fifth system continues with a piano part with a steady eighth-note accompaniment and a vocal line with a repeat sign. The sixth system concludes the piece with a piano part with a steady eighth-note accompaniment and a vocal line with a repeat sign.

(Fine)

Trio

pp dolce

Da Capo

Nº 6.

The musical score for Schubert's 20th Last Waltz, No. 6, is presented in a single system. The key signature is D major (two sharps) and the time signature is 3/4. The score begins with a piano introduction marked *ff*. The first system contains measures 1 through 8. The second system contains measures 9 through 16. The score is divided into sections: the first system is the introduction, the second system is the Trio section, and the third system is the Da Capo section. The Trio section is marked *p* and *fp*. The Da Capo section is marked *ff* and *fz*. The score concludes with a *Da Capo* instruction.

ff

p *fp* *fp* *fp* *fp* *ff* *fz* *fz* *fz*

f *fz* *fz* *fz* *fz* *fz* *fz* *fz* *fz*

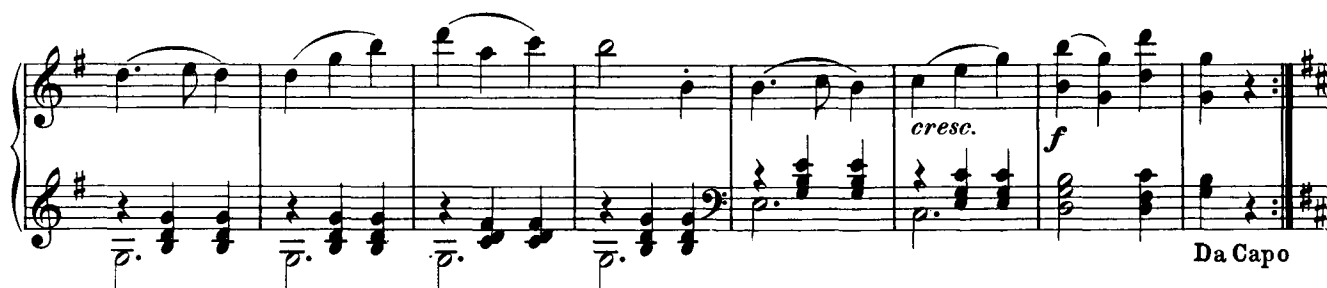
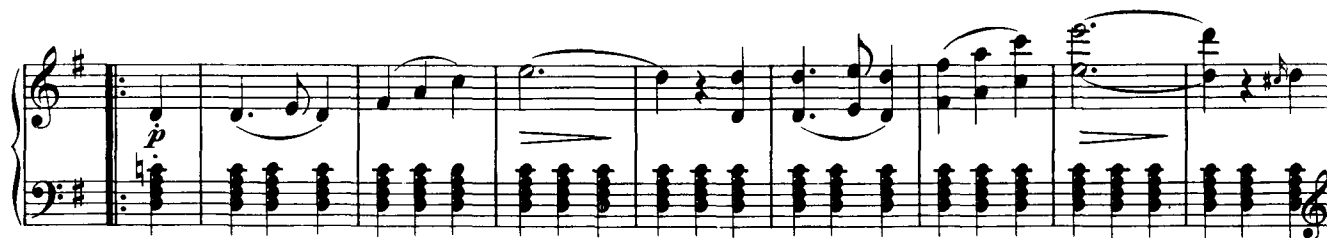
ff *fz* *fz* *fz*

Da Capo

Nº 7.



(Fine)

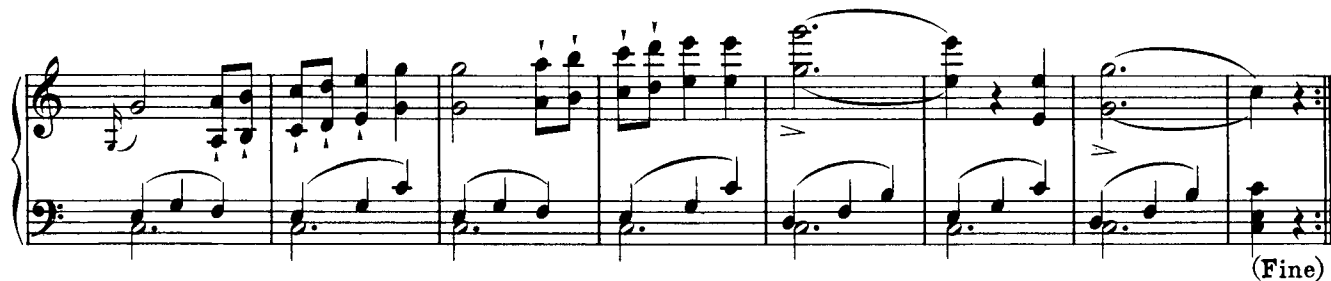
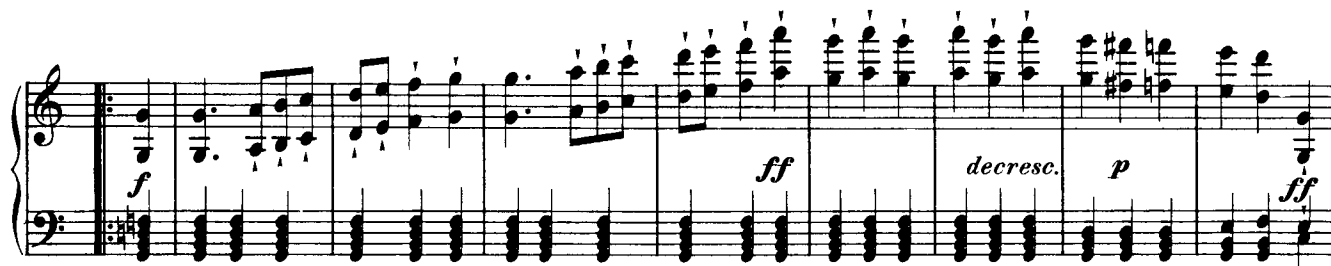
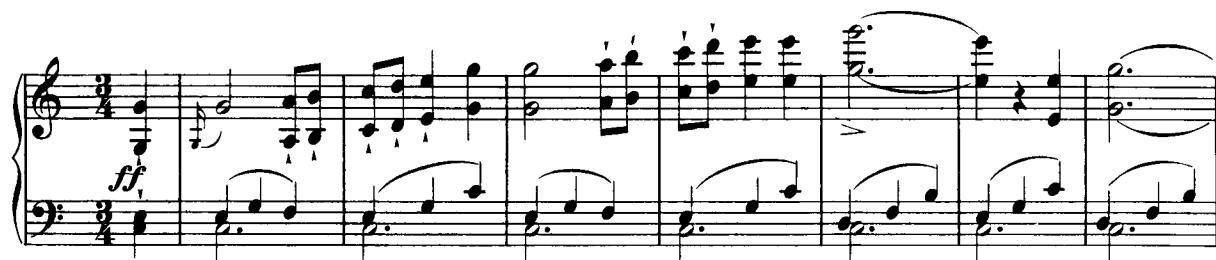


Da Capo

Nº 8.

The musical score for Schubert's 20 Waltzes, No. 8, is presented in two systems. The first system contains the first 16 measures of the piece. The key signature is one sharp (F#), and the time signature is 3/4. The notation is for piano, with a treble and bass staff. The first 16 measures are marked with *fz* (forzando). The piece concludes with a *Fine* marking. The second system contains the Trio section, which begins with a *p* (piano) marking. The Trio section is marked with *pp* (pianissimo) and *mf* (mezzo-forte). The Trio section concludes with a *Da Capo* marking.

Nº 9.



Trio



Nº 10.

ff

fz *fz* *fz* *fz*

fz *ff* *p* *bg* *bg* *bg*

pp

ff

fz *fz* *fz* *fz*

pp

Trio *pp*

pp

(Fine)

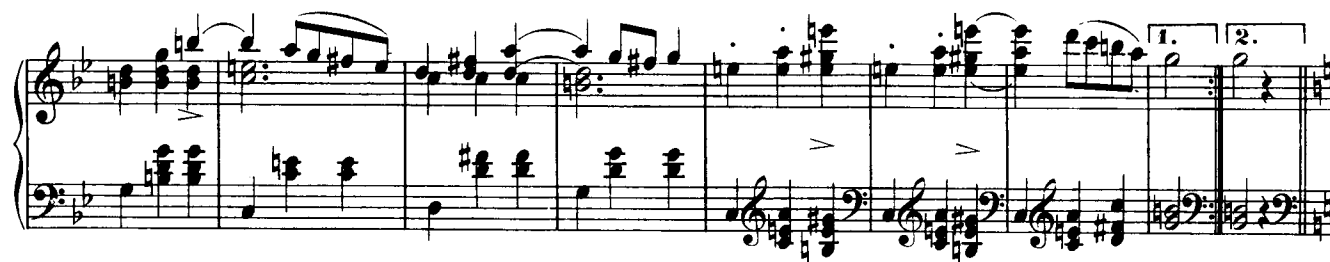
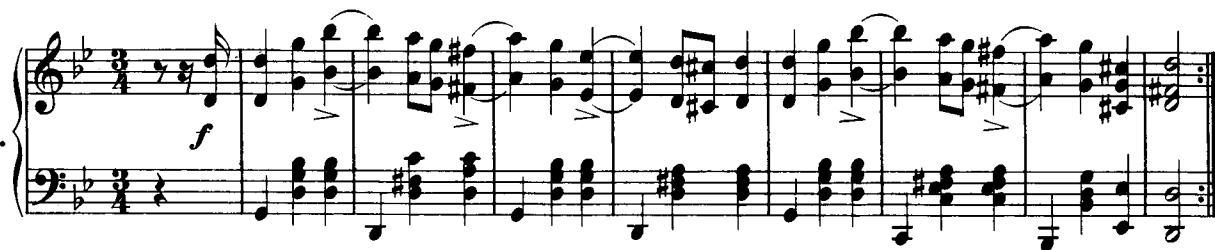
Da Capo

Nº 11.

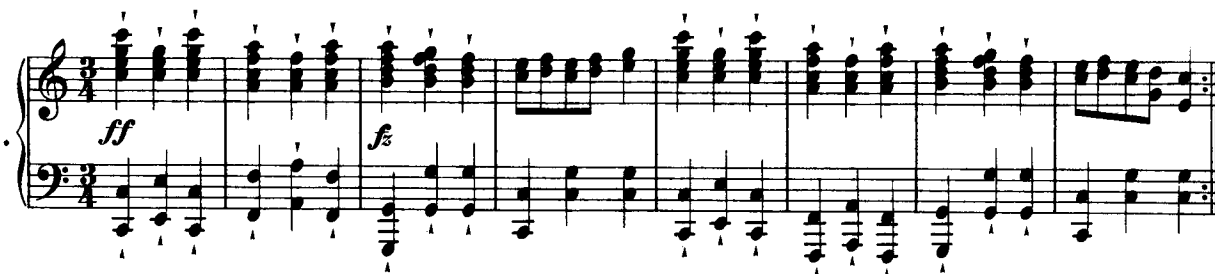
Trio

Da Capo

Nº 12.



Nº 13.



Nº 14.



First system of a waltz, measures 1-6. The key signature is one sharp (F#). The time signature is 3/4. The piece begins with a repeat sign. The first measure has a piano (*p*) dynamic. The second measure has an accent (>) and a forte (*f*) dynamic. The third measure has a piano (*p*) dynamic. The fourth measure has an accent (>) and a forte (*f*) dynamic. The fifth measure has a piano (*p*) dynamic. The sixth measure has an accent (>) and a forte (*f*) dynamic.

Second system of a waltz, measures 7-12. The key signature is one sharp (F#). The time signature is 3/4. The piece continues with a piano (*p*) dynamic in measure 7, followed by a forte (*f*) dynamic in measure 8. Measure 9 has a piano (*p*) dynamic. Measure 10 has a forte (*f*) dynamic. Measure 11 has a piano (*p*) dynamic. Measure 12 has a forte (*f*) dynamic. The system ends with a first and second ending bracket.

Nº 15.

Third system of a waltz, measures 13-18. The key signature is one flat (Bb). The time signature is 3/4. The piece begins with a piano (*pp*) dynamic. The first measure has a piano (*pp*) dynamic. The second measure has a piano (*pp*) dynamic. The third measure has a piano (*pp*) dynamic. The fourth measure has a piano (*pp*) dynamic. The fifth measure has a piano (*pp*) dynamic. The sixth measure has a piano (*pp*) dynamic.

Fourth system of a waltz, measures 19-24. The key signature is one flat (Bb). The time signature is 3/4. The piece continues with a piano (*pp*) dynamic in measure 19, followed by a piano (*pp*) dynamic in measure 20. Measure 21 has a piano (*pp*) dynamic. Measure 22 has a piano (*pp*) dynamic. Measure 23 has a piano (*pp*) dynamic. Measure 24 has a piano (*pp*) dynamic.

Nº 16.

Fifth system of a waltz, measures 25-30. The key signature is one flat (Bb). The time signature is 3/4. The piece begins with a forte (*f*) dynamic. The first measure has a forte (*f*) dynamic. The second measure has a forte (*f*) dynamic. The third measure has a forte (*f*) dynamic. The fourth measure has a forte (*f*) dynamic. The fifth measure has a forte (*f*) dynamic. The sixth measure has a forte (*f*) dynamic.

Sixth system of a waltz, measures 31-36. The key signature is one flat (Bb). The time signature is 3/4. The piece continues with a piano (*p*) dynamic in measure 31, followed by a forte (*f*) dynamic in measure 32. Measure 33 has a forte (*f*) dynamic. Measure 34 has a forte (*f*) dynamic. Measure 35 has a forte (*f*) dynamic. Measure 36 has a forte (*f*) dynamic.

Nº 17.

pp

1. 2.

Nº 18.

pp

1. 2.

Nº 19.

p

p *cresc.* *f p* *cresc.*

f *p*

Nº 20.

p *p*

cresc. *f* *p* *fp* *fp* *Trio* *(Fine)*

fp *fp* *ff*

p

fp *fp* *fp* *fp*

Da Capo